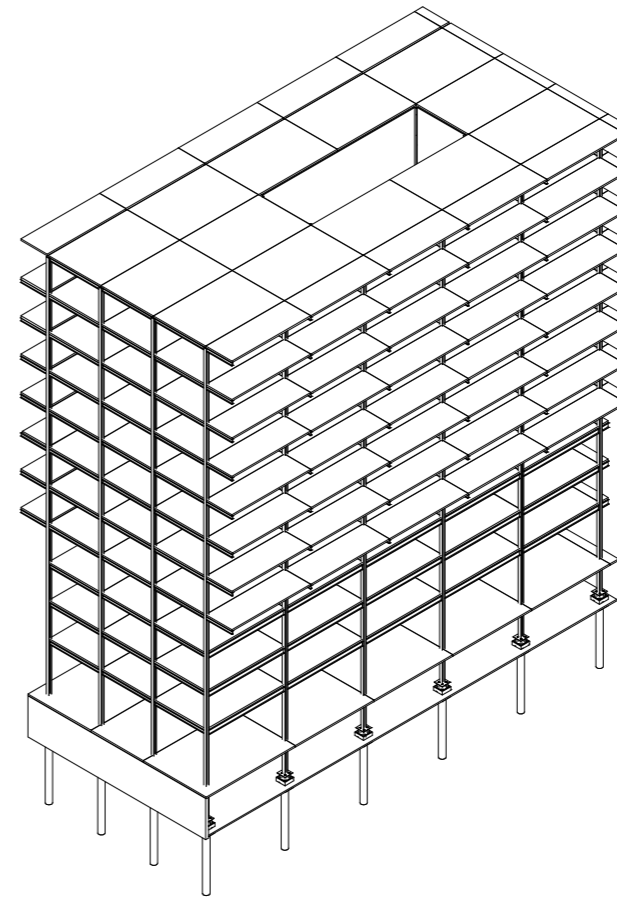


CONTENTS

Page no.	Drawing
A101	Whole Structure Axonometric 1:500
A102	Ground Floor Plan with surrounding context- 1:200
A103	West side - Ground Floor Plan - 1:100
A104	East side - Ground Floor Plan - 1:100
A105	West side - Ceiling Plan - 1:100
A106	East side - Ceiling Plan - 1:100
A107	Column/Beam/Flooring connection PLAN detail 1 : 10
A107	Column/Beam/Flooring connection SECTION detail 1 : 10
A107	Column/Beam/Flooring connection AXONOMETRIC detail 1 : 10
A108	Shear wall/flooring/beam connection PLAN detail 1 : 10
A108	Shear wall/flooring/beam connection SECTION detail 1 : 10
A108	Shear wall/flooring/beam connection AXONOMETRIC detail 1 : 10
A303*	<i>Beam to Column connection Office Floor - drawn by Devon Tuncliffe</i>
A304*	<i>Edge Beam to Column connection Office Floor - drawn by Devon Tuncliffe</i>
A103*	<i>Base Isolator Detail drawn by Lenny Lynch</i>

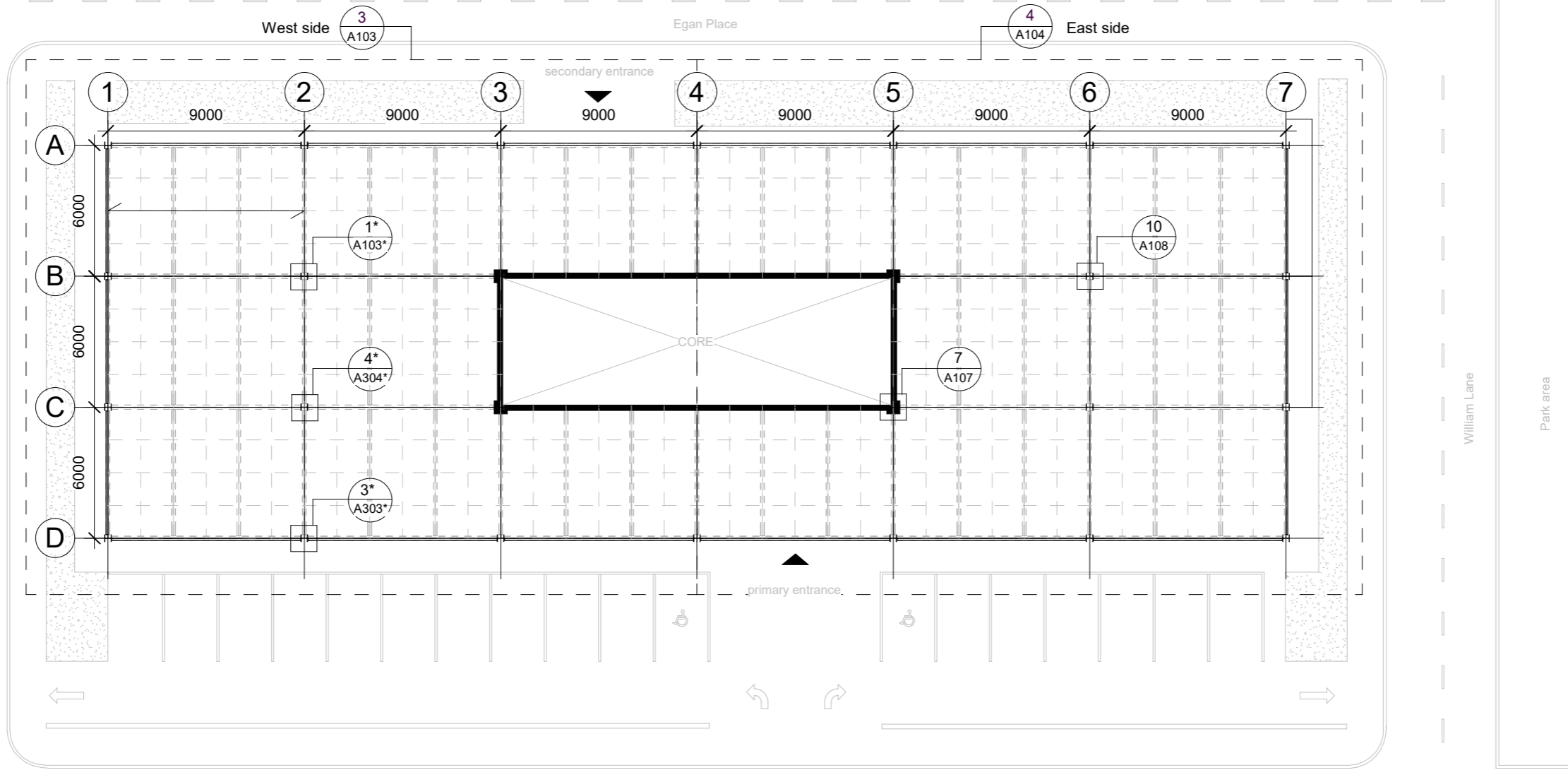


Basement - Base Isolators
 Ground Floor - Retail
 Floors 1-4 - Office
 Floors 4-12 - Residential
 Building Footprint - 972 sqm

1 Whole building structure - axonometric
 1 : 500

This design and drawing is the copyright of ABC Limited and is not to be reproduced without written permission. Atelier Architects. Mount Victoria, Wellington	Drawn By: Emelie Clarke	Project: SARC 321, Project 01	Drawing: Building Whole Structure & Contents	Drawn By: Author	Checked By: Checker	Date: 23/07/21
	Group: Emelie Clarke, Devon Tuncliffe and Lenny Lynch	Site: 100 - 128 Palmer Street, Sydney	Drawn Scale: 1 : 500	Reduced Scale:	CAD Filename:	Sheet No: A101

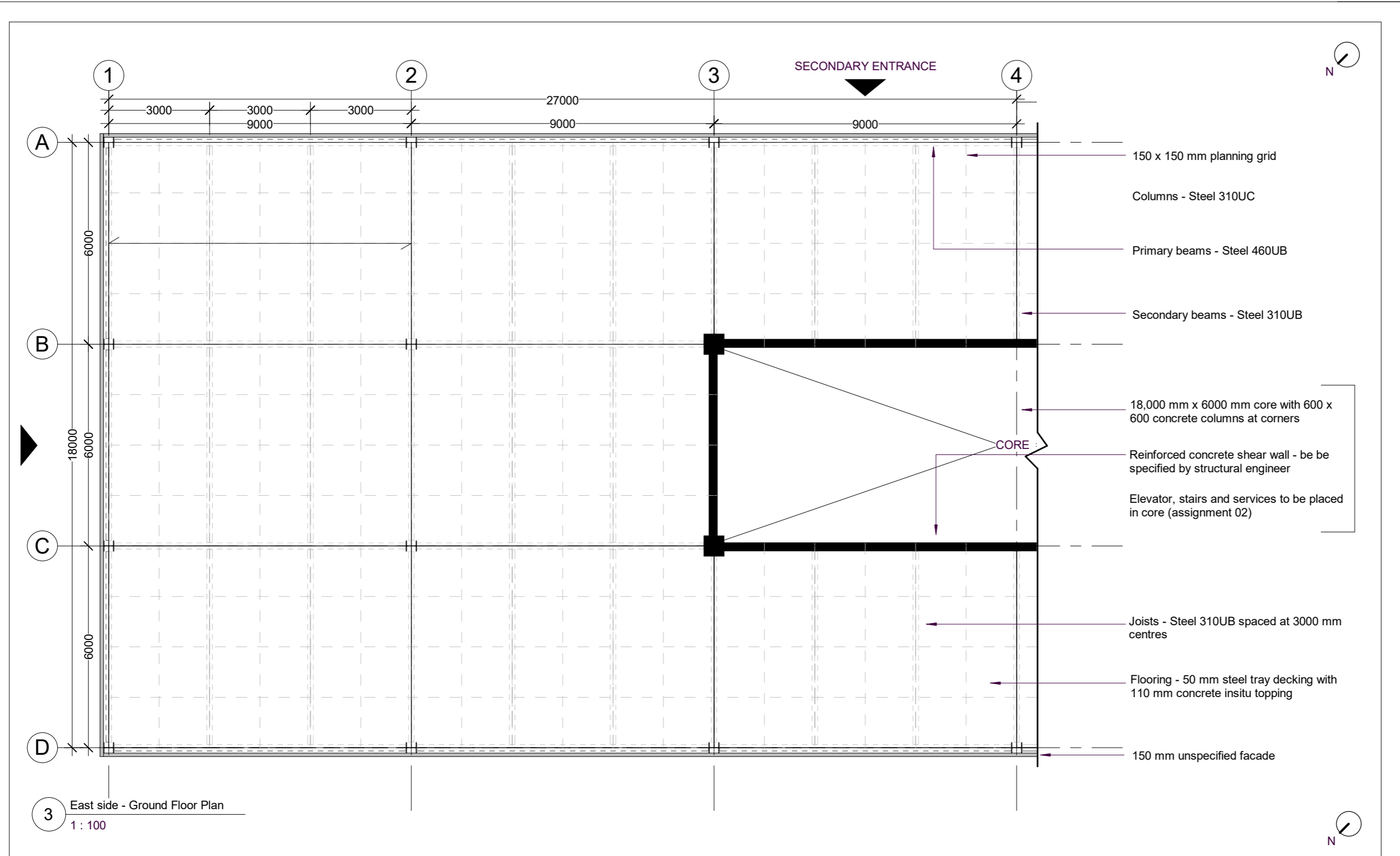
Abandoned apartment building



2 Ground Floor Plan with Surrounding Context
1 : 200

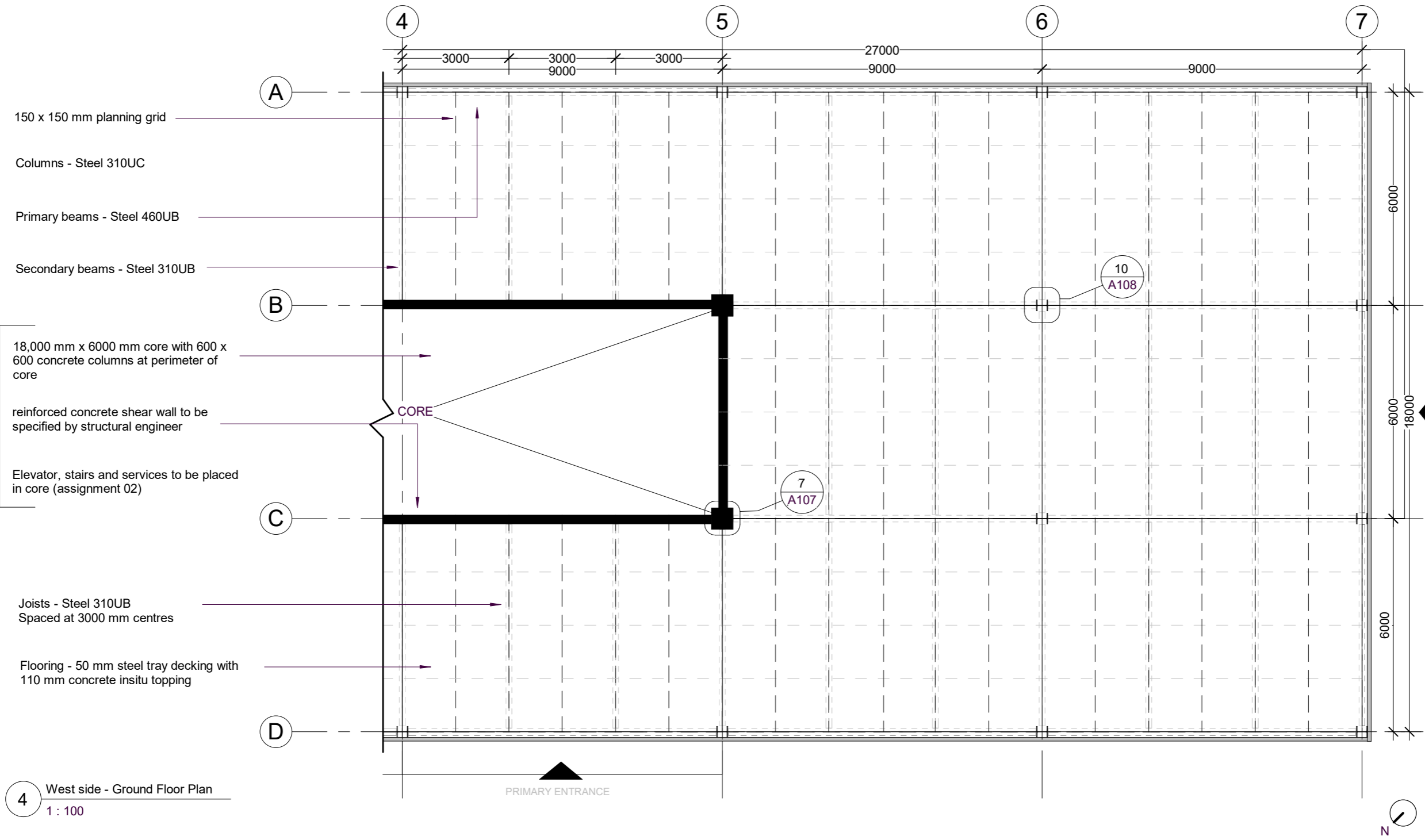


<p>This design and drawing is the copyright of ABC Limited and is not to be reproduced without written permission.</p> <p>Atelier Architects. Mount Victoria, Wellington</p>	<p>Drawn By: Emelie Clarke</p>	<p>Project: SARC 321, Project 01</p>	<p>Drawing: Ground Floor Plan with surrounding context</p>	<p>Drawn By: Author Checked By: Checker Date: 23/07/21</p>
	<p>Group: Emelie Clarke, Devon Tunnicliffe and Lenny Lynch</p>	<p>Site: 100 - 128 Palmer Street, Sydney</p>	<p>Drawn Scale: 1 : 200 Reduced Scale:</p>	<p>CAD Filename: Sheet No: A102</p>
				<p>Project No. 01</p>



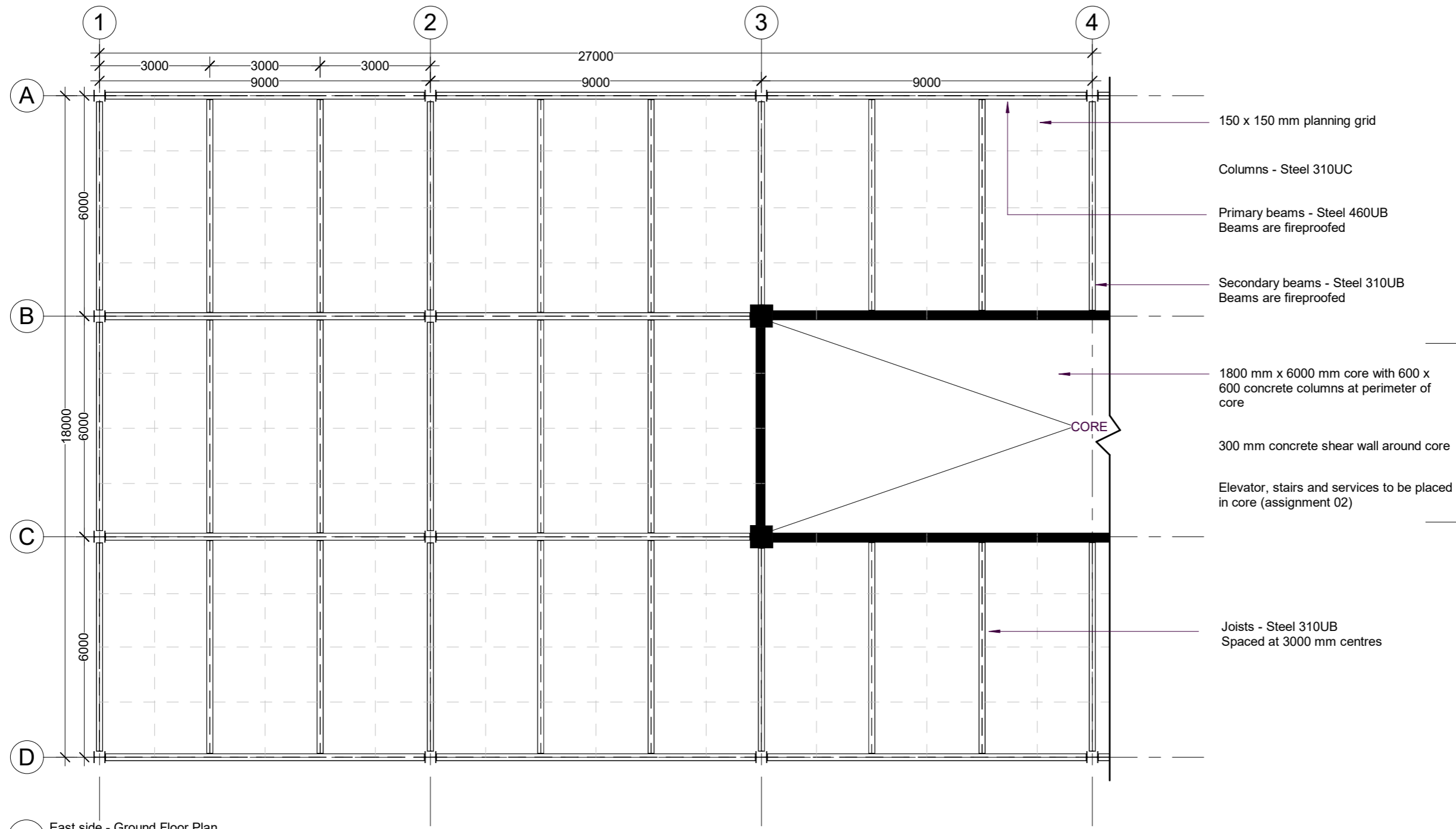
3 East side - Ground Floor Plan
1 : 100

This design and drawing is the copyright of ABC Limited and is not to be reproduced without written permission. Atelier Architects. Mount Victoria, Wellington	Drawn By: Emelie Clarke	Project: SARC 321, Project 01	Drawing: West Side Ground Floor Plan	Drawn By: Author	Checked By: Checker	Date: 23/07/21
	Group: Emelie Clarke, Devon Tunnicliffe and Lenny Lynch	Site: 100 - 128 Palmer Street, Sydney	Drawn Scale: 1 : 100	Reduced Scale:	CAD Filename:	Sheet No: A103



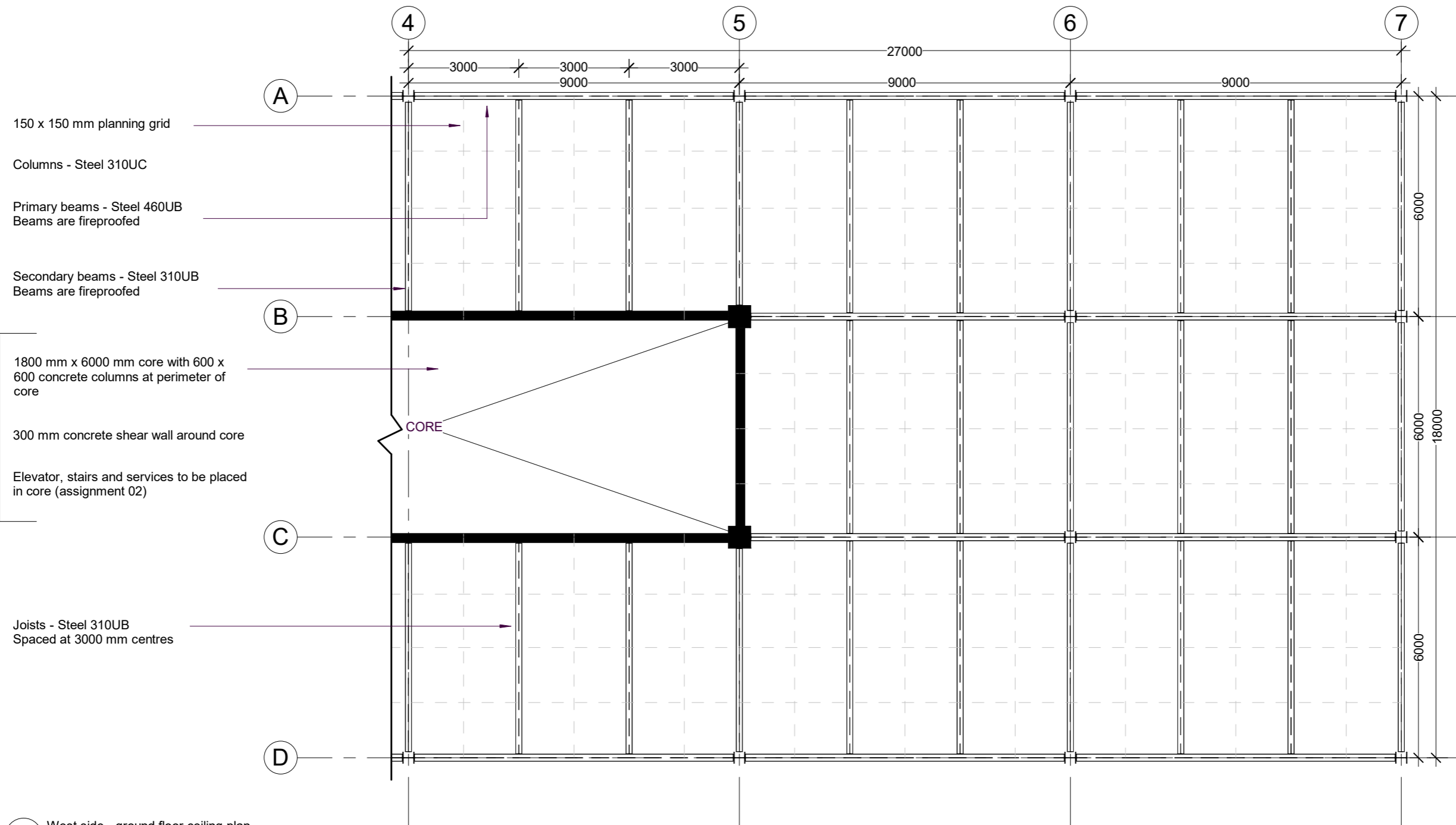
4 West side - Ground Floor Plan
1 : 100

This design and drawing is the copyright of ABC Limited and is not to be reproduced without written permission. Atelier Architects. Mount Victoria, Wellington	Drawn By: Emelie Clarke	Project: SARC 321, Project 01	Drawing: East Side Ground Floor Plan	Drawn By: Author Checked By: Checker Date: 23/07/21
	Group: Emelie Clarke, Devon Tunnicliffe and Lenny Lynch	Site: 100 - 128 Palmer Street, Sydney	Drawn Scale: 1 : 100 Reduced Scale:	CAD Filename: Sheet No: A104



5 East side - Ground Floor Plan
1 : 100

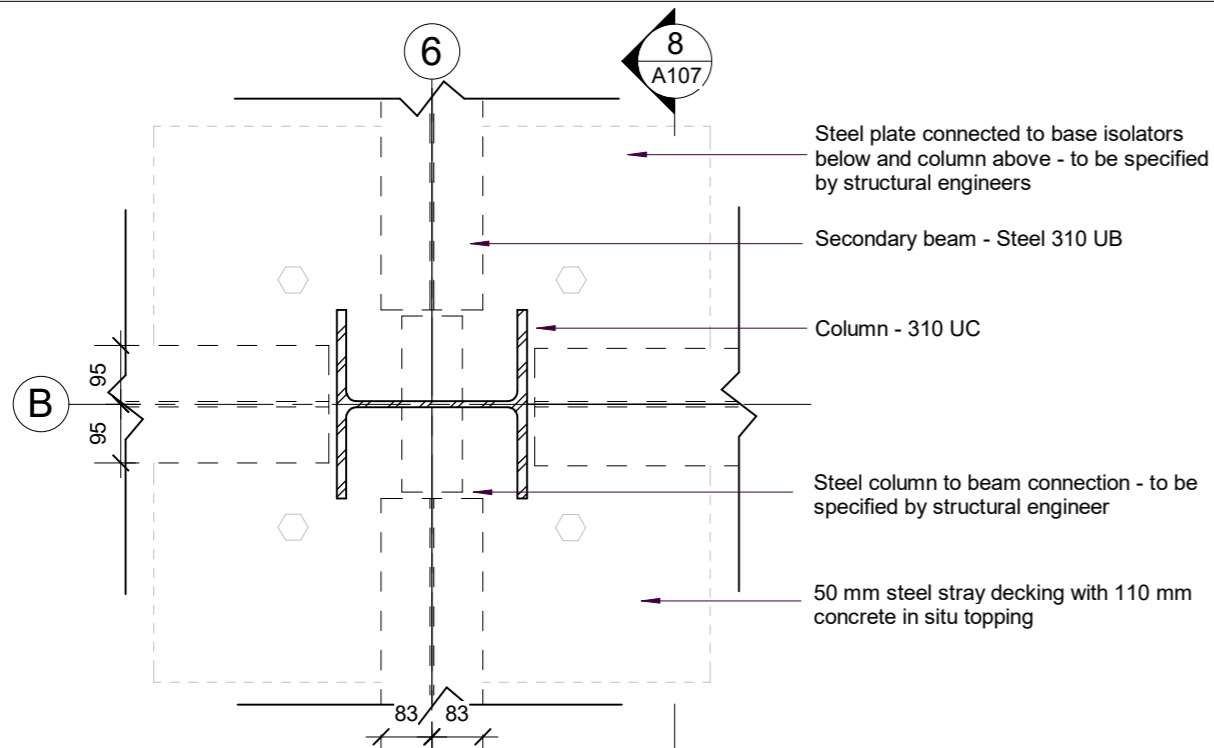
This design and drawing is the copyright of ABC Limited and is not to be reproduced without written permission. Atelier Architects. Mount Victoria, Wellington	Drawn By: Emelie Clarke	Project: SARC 321, Project 01	Drawing: West Side Ceiling Plan	Drawn By: Author	Checked By: NZIA	Date: 23/07/21
	Group: Emelie Clarke, Devon Tunnicliffe and Lenny Lynch	Site: 100 - 128 Palmer Street, Sydney	Drawn Scale: 1 : 100	Reduced Scale:	CAD Filename:	
				Project No. 01		



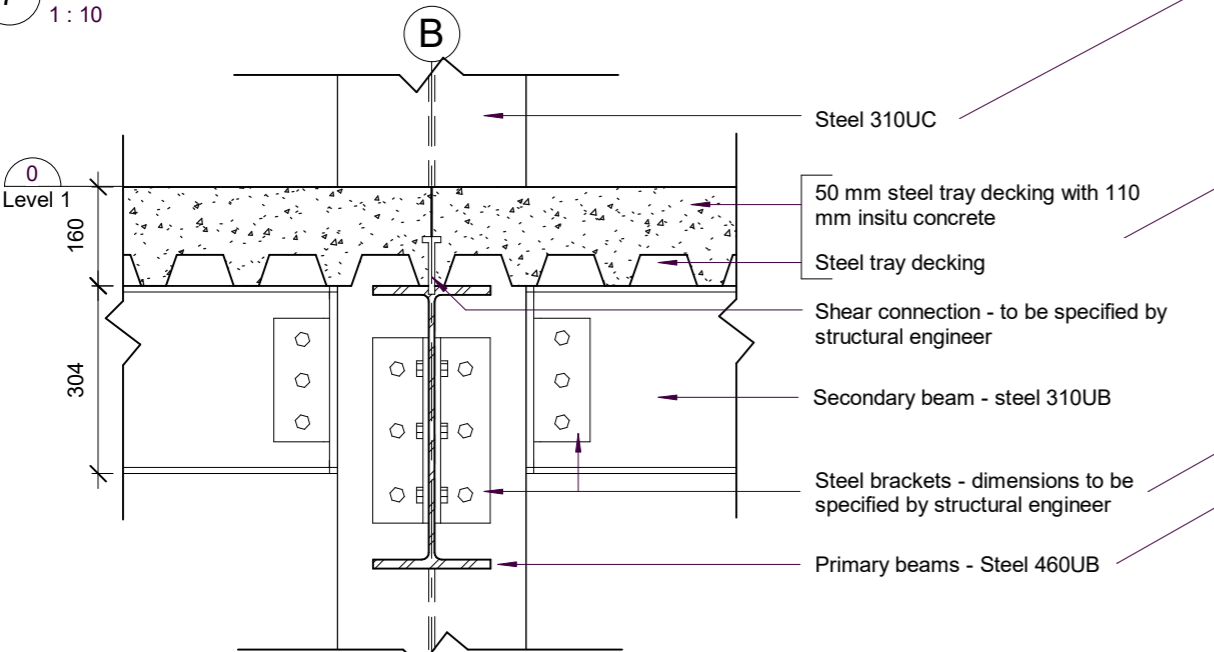
6 West side - ground floor ceiling plan
1 : 100



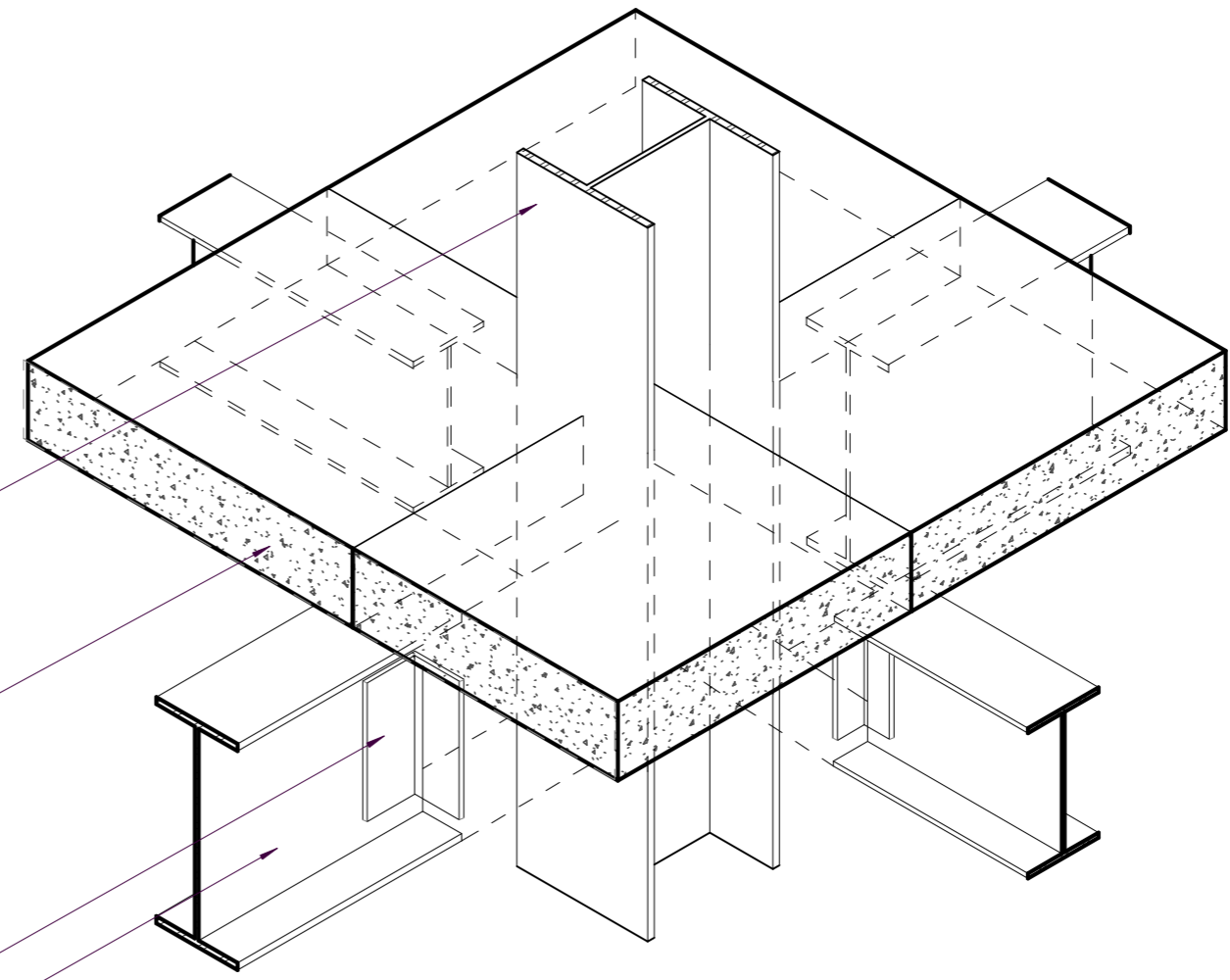
This design and drawing is the copyright of ABC Limited and is not to be reproduced without written permission. Atelier Architects. Mount Victoria, Wellington	Drawn By: Emelie Clarke	Project: SARC 321, Project 01	Drawing: East Side Ceiling Plan	Drawn By: Author	Checked By: Checker	Date: 23/07/21
	Group: Emelie Clarke, Devon Tunnicliffe and Lenny Lynch	Site: 100 - 128 Palmer Street, Sydney	Drawn Scale: 1 : 100	Reduced Scale:	CAD Filename:	Sheet No: A106



6 Beam/column/flooring connection
1 : 10



7 Beam/column/flooring connection
1 : 10



8 Beam/column/flooring connection
1 : 10

Note - all steel beams are fireproofed

This design and drawing is the copyright of ABC Limited and is not to be reproduced without written permission.

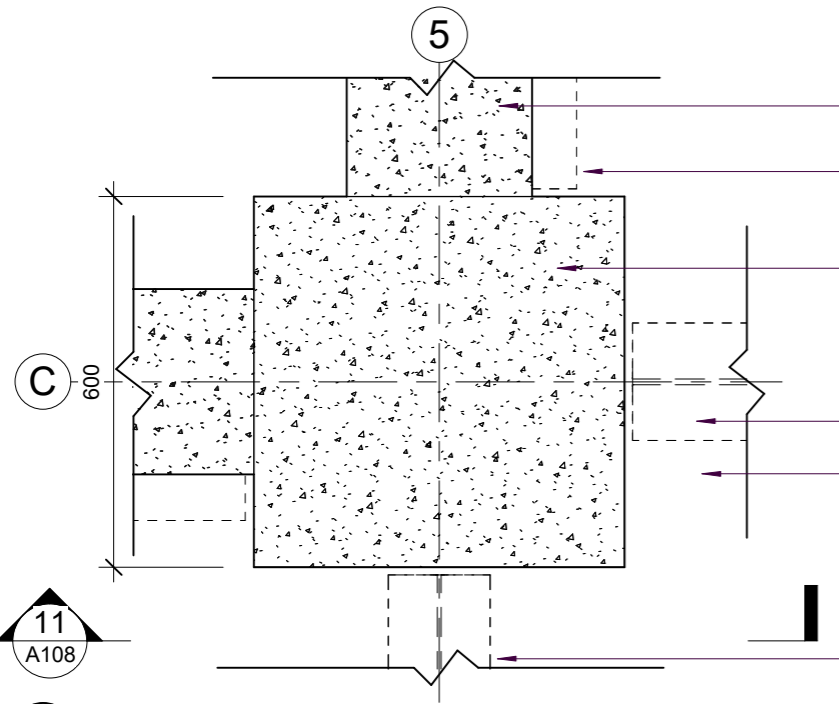
Atelier Architects.
Mount Victoria, Wellington

Drawn By:
Emelie Clarke
Group:
Emelie Clarke, Devon Tuncliffe and Lenny Lynch

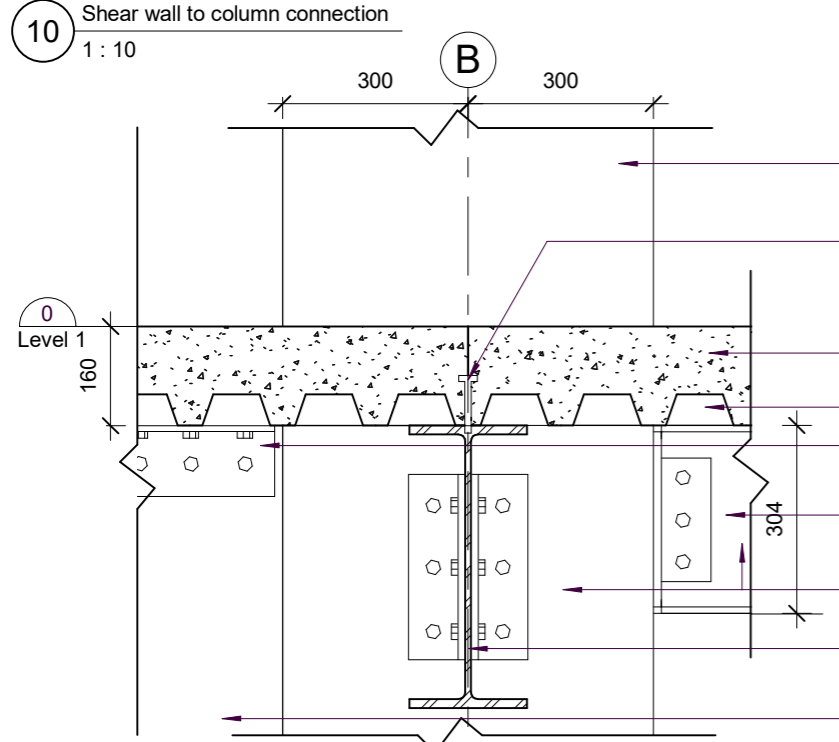
Project:
SARC 321, Project 01
Site:
100 - 128 Palmer Street, Sydney

Drawing:
Beam/Floor/Column detail connection
Drawn Scale:
1 : 10
Reduced Scale:

Drawn By: Author	Checked By: Checker	Date: 23/07/21
CAD Filename:		Sheet No: A107
Project No. 01		

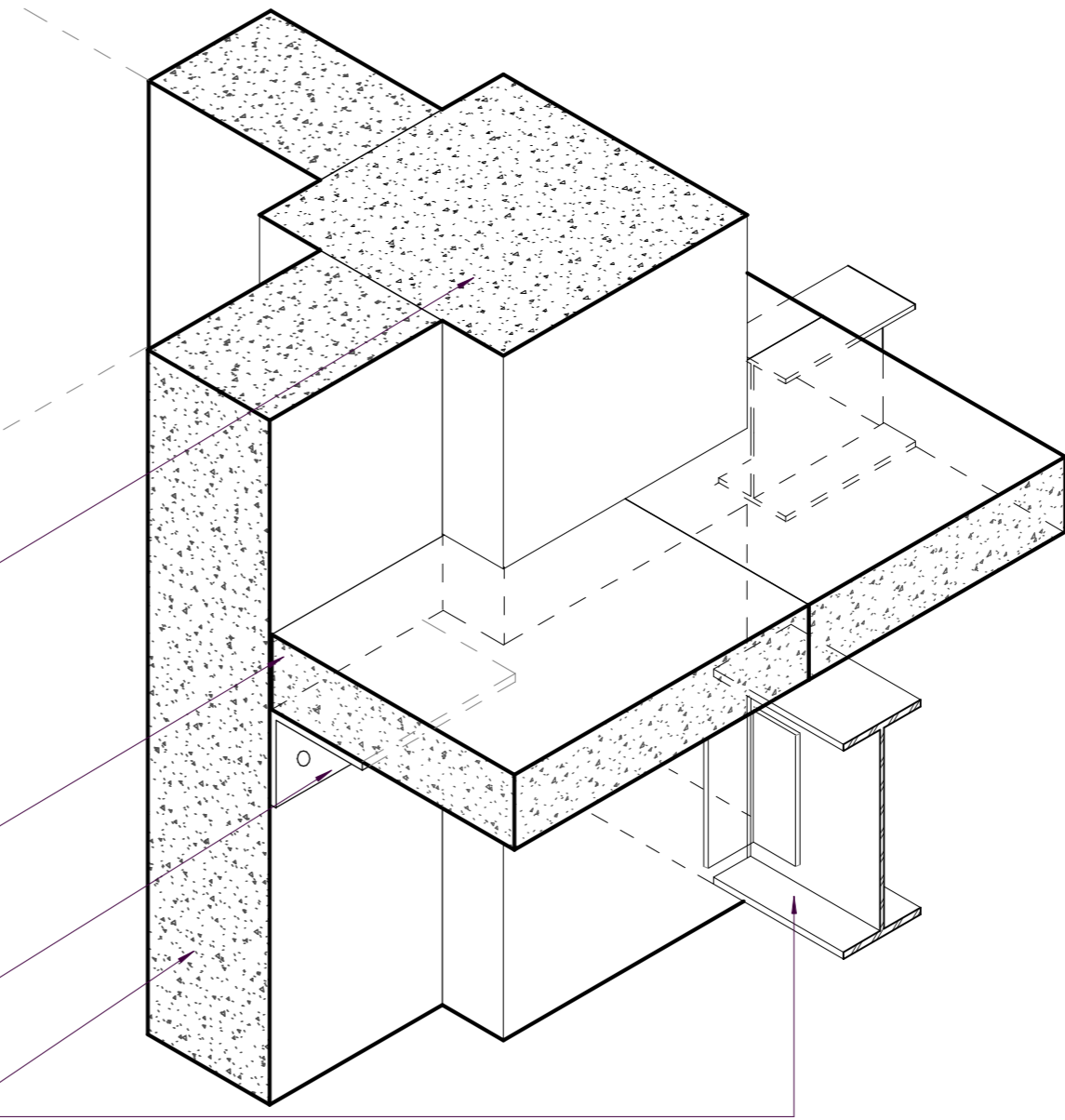


- Shear wall around core - dimensions to be specified by structural engineer
- Bracket connecting flooring to shear wall - specified by structural engineer
- 600 x 600 reinforced concrete column around perimeter of core
- Primary beams - Steel 460UB
- Flooring - 50 mm steel tray decking with 110 mm insitu concrete
- Secondary beam - steel 310UB



- 600 x 600 reinforced concrete column around perimeter of core
- Shear connection - to be specified by structural engineer
- 50 mm steel tray decking with 110 mm insitu concrete
- Bracket connecting flooring to shear wall - specified by structural engineer
- Secondary beam - steel 310UB
- Steel brackets - dimensions and bolts to be specified by structural engineer
- Primary beam - Steel 460UB
- Shear Wall - dimensions to be specified by structural engineer

11 Shear wall to column connection
1 : 10



12 Shear wall to column connection
1 : 10

Note - all steel beams are fireproofed

This design and drawing is the copyright of ABC Limited and is not to be reproduced without written permission. Atelier Architects. Mount Victoria, Wellington	Drawn By: Emelie Clarke	Project: SARC 321, Project 01	Drawing: Shear wall/beam/column connection	Drawn By: Author	Checked By: Checker	Date: 23/07/21
	Group: Emelie Clarke, Devon Tunnicliffe and Lenny Lynch	Site: 100 - 128 Palmer Street, Sydney	Drawn Scale: 1 : 10	Reduced Scale:	CAD Filename:	Sheet No: A108